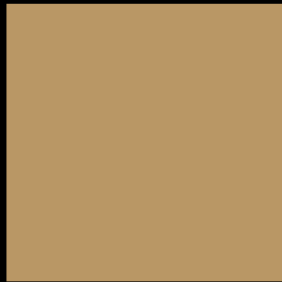
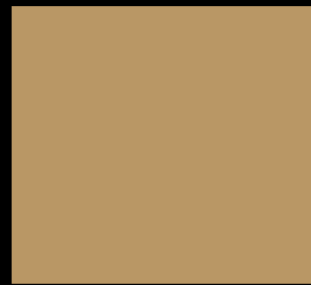
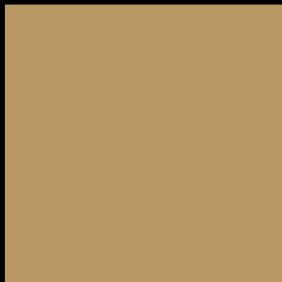
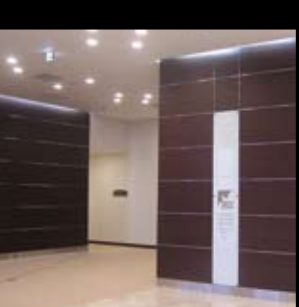




DI-NOC™ ARCHITECTURAL FINISHES

Planning Guide



Awaken Your Creativity, Challenge the Status-quo

DI-NOC™ Architectural Finishes create a new world of functional building materials

DI-NOC architectural finishes are products that have a history going back over 70 years. We offer a variety of colors and designs to help create unique environments, and give you broad creative freedom with interior and exterior design. As a leader in the industry, **DI-NOC** architectural finishes are inspiring designers and architects worldwide.



CONTENTS

Characteristics of **DI-NOC™** Architectural Finishes . pp. 4&5

Examples of use

1. Office buildings pp. 6-9
2. Hotels pp. 10-13
3. Housing developments pp. 14&15
4. Restaurants pp. 16&17
5. Game arcades pp. 18&19
6. Department stores p 20
7. Halls p. 21

8. Educational institutions pp. 22&23
9. Hospitals pp. 24-27
10. Retirement homes pp. 28&29
11. Exterior walls pp. 30&31

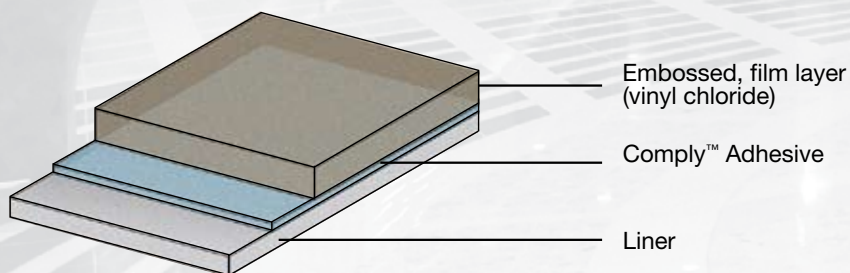


DI-NOC™ ARCHITECTURAL FINISHES SERIES

More than 500 finishes are available that simulate different traditional materials and colors. Regardless of where and how **DI-NOC** architectural finishes are used, they deliver a quick and stylish appearance.

DI-NOC™ ARCHITECTURAL FINISHES

DI-NOC™ Architectural Finish is a self-adhesive film



The picture above shows a typical DI-NOC™ Architectural Finish composition. Composition and materials vary for different product lines.

COLORFUL



We offer a variety of colors and patterns

More than 500 different **DI-NOC™** Architectural Finishes are available to awaken your creativity. With a wide range of potential interior and exterior applications, you can achieve practically any desired finish by choosing from our wide array of products. From basic and plain patterns to those with the look and feel of real wood, or complex, creative patterns to those with metallic and gold looks, **DI-NOC** architectural finishes give you the finish you need to create a unique visual experience.

TOUGH



Resistance and versatility create long-lasting beauty

As a result of 3M's decades of experience in the production of self-adhesive films, **DI-NOC™** Architectural Finishes not only have excellent resistance to water, dirt, impacts, abrasion and mold, it is also flame-retardant and IMO certified for the marine sector. The PS Single Color Series are anti-microbial, which makes them suitable for application in hospitals and other environments.

EFFORTLESS



Easy application and attractive finish

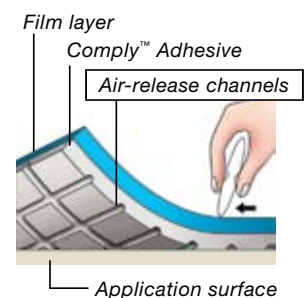
Completed projects using **DI-NOC™** Architectural Finishes are always finished with a professional appearance. Application to large and uneven surfaces is simple. Its reduced thickness enables installations that are lighter in weight than traditional panelling, whereas its self-adhesive feature allows conversion and application in situ to the existing substrate leading to reduced labor cost compared to when working with authentic materials used in renovation. **DI-NOC** architectural finishes can be thermoformed for three dimension curved applications.

Comply™ Adhesive

Fast & High quality application

Adhesive system prevents bubbling

DI-NOC™ architectural finishes use Comply™ Adhesive which is comprised of grid-like channels that allow air to escape during application. Large or small applications, the job is much easier, faster, and has a more professional appearance with the help of Comply adhesive.



example

1

Office buildings

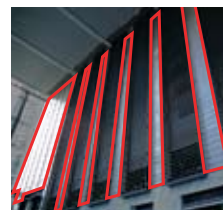


Product shown

Ebony grain

Product number **WG-664**





Product shown

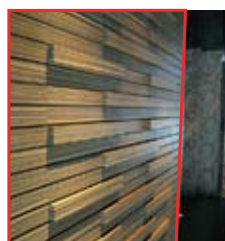
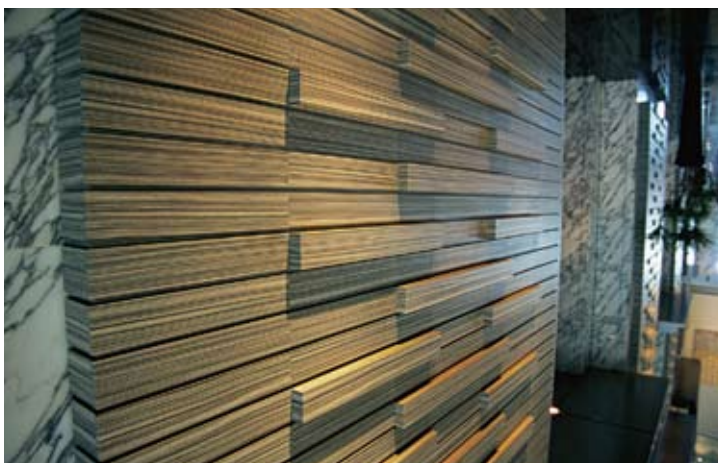
Zebrawood pattern

Product number FW-656



Modern space is created by the contrast between metal and wood

A beautiful wood-grain pattern emphasizes straight lines and geometric designs. The classic feel of zebrawood and ebony pattern creates an elegant touch.



example

2

Office buildings

Tranquility expressed with the natural feel of wood

The look of wood adds warmth and comfort to cold and rigid spaces.
A sense of elegance radiates throughout this office foyer.



Product shown

Oak (Nara) grain

Product number **FW-627**



example

3

Office buildings

Rich contrasts create a businesslike atmosphere in an aesthetic way

The contrast in finishes adds variety to monotonous daily routines.

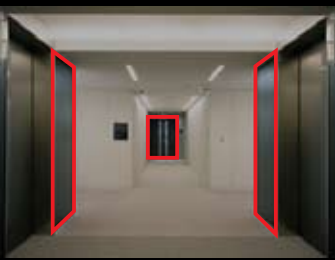
The warmth and richness of the accents help to create a calming environment.



Product shown

Paulownia grain

Product number FW-640



Product shown

Paulownia grain

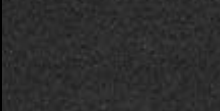
Product number FW-640



Product shown

Chic

Product number PA-185



example

4

Hotels

HOTEL EMION TOKYO BAY

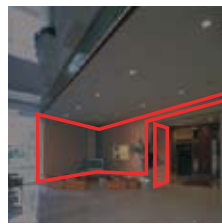


Product shown

Anigre grain

Product number **WG-628**





Product shown

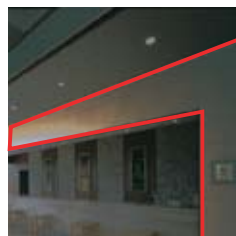
Anigre grain

Product number **WG-628**



Provides timeless comfort to a bright space

The warmth of wood grain perfectly compliments marble and adds a touch of comfort to the hotel foyer.



Product shown

Anigre grain

Product number **WG-628**



example

5

Hotels

Elegance accentuated by walnut patterns gives guests a warm welcome

Create the perfect feel for the guest reception area of your hotel by creating an environment that is welcoming and warm. This walnut pattern provides warmth and sophistication.



Product shown

Walnut grain

Product number **FW-651**





Product shown

Walnut grain

Product number **FW-651**



Product shown

Walnut grain

Product number **FW-651**



example

6

Housing developments



Product shown

Cherry (sakura) grain

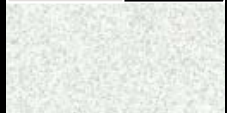
Product number **FW-655**



Product shown

Metallic

Product number **ME-536**





Product shown

Cherry (sakura) grain

Product number **FW-655**



Product shown

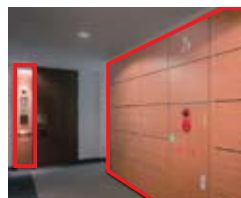
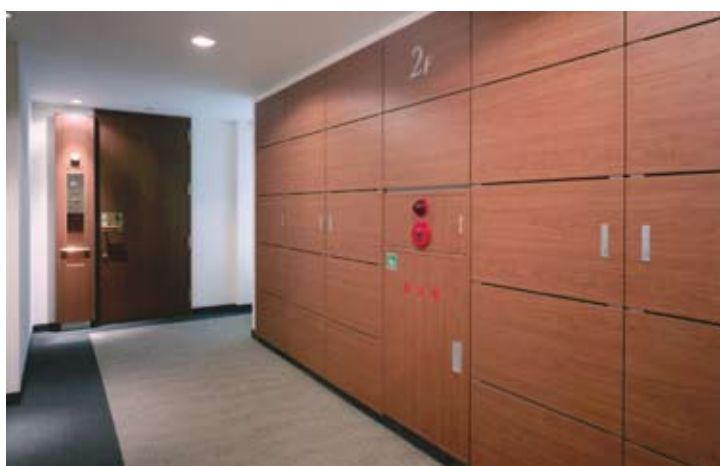
Metallic

Product number **ME-536**



Serenity in a vast white space

Brilliant powdery white combined with soft cherry patterned accents. The effect is a pleasing tranquility in the communal areas of housing developments.



Product shown

Cherry (sakura) grain

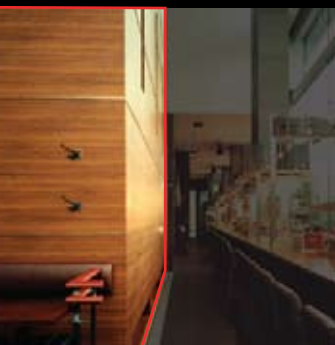
Product number **FW-655**



example

7

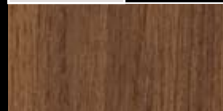
Restaurants



Product shown

Teak grain

Product number **WG-157**





Product shown

Teak grain

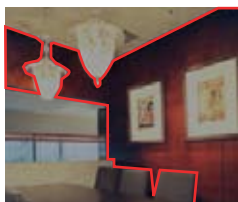
Product number **WG-157**



Comfort and relaxation through the use of natural colours and shades

The modest teak grain coloring creates a perfect environment for casual dining.

A modest wood grain pattern brings out the beauty in simple modern interior design.



Product shown

Uenju grain

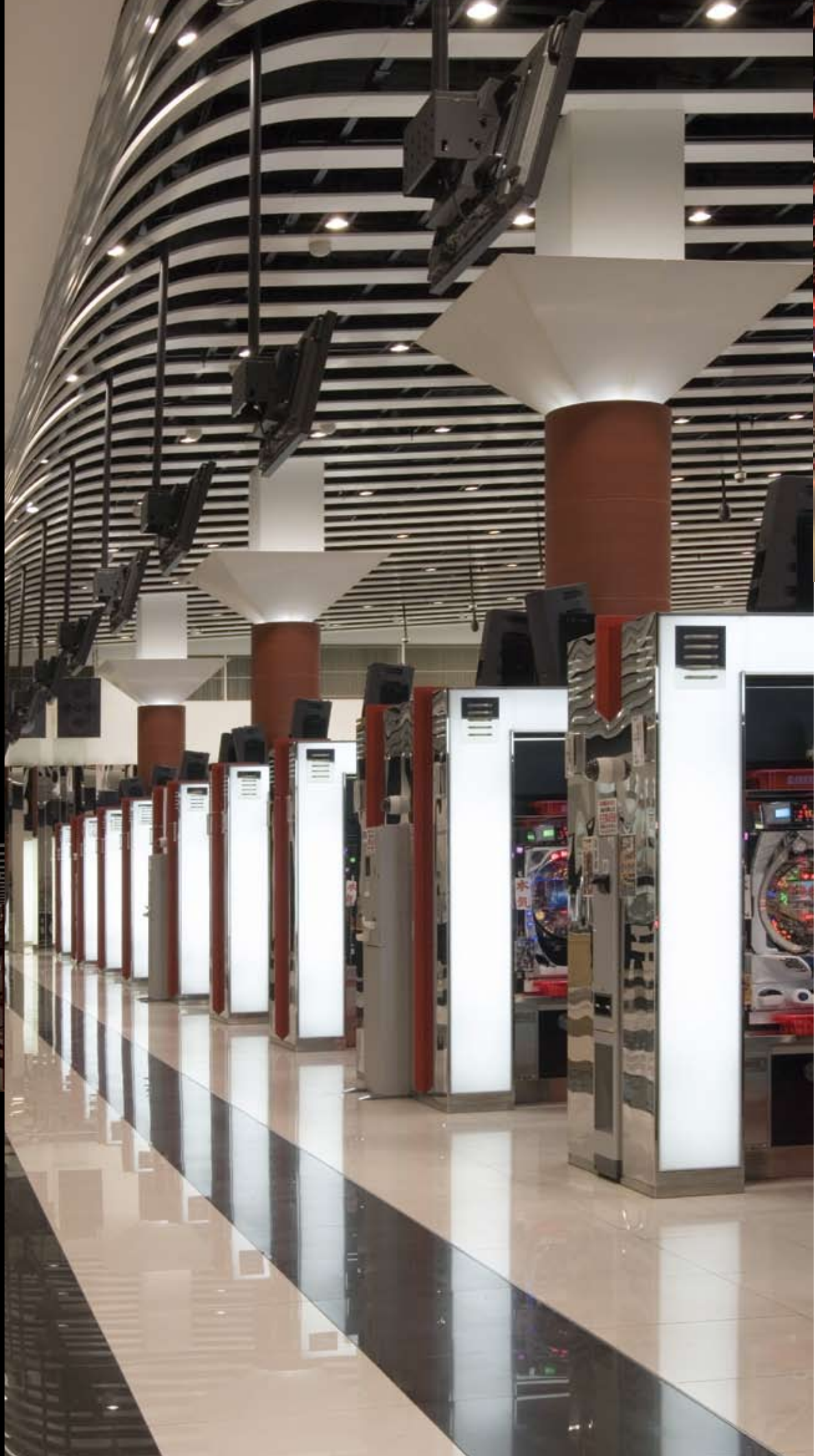
Product number **FW-238**



example

8

Game arcades
(Pachinko shops)

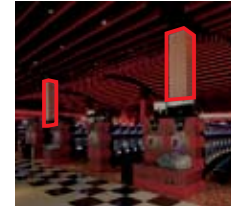


Product shown

Pear (Nashi) grain

Product number **WG-410**





Product shown

Pear (Nashi) grain

Product number **WG-410**



A futuristic space gains warmth with wood

By adding warmth with a touch of wood into a space composed of contrasts, players will feel relaxed in an environment that emphasizes openness and fun.



Product shown

Hyper metallic

Product number **HM-37F**



example

9

Department stores

Brushed metallic shines under artificial light

Mirrored silver was selected for the grid-like patterns.

The result is an urban space that functions beautifully as the setting for your merchandise.



Product shown

Tape-mirror

Product number **VM-167**



Marui City Ueno
(Planning and construction:
Aim Creates, Inc.)

example

10

Halls

Wood grain pattern looks attractive in a simple space

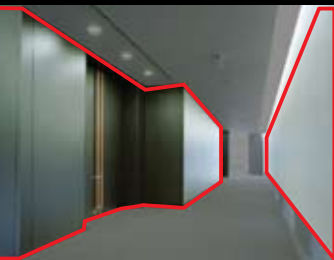
High ceilings and the use of silver-colored hearts create a feeling of openness in the room. The bright, natural look provides a sophisticated and relaxed atmosphere.



Product shown

Silver heart

Product number **WG-250**



Product shown

Wenju grain

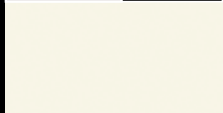
Product number **FW-618**



Product shown

Single color

Product number **PS-976**



example

11

Educational institutions

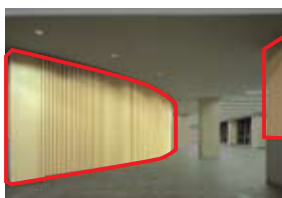




The polished look of maple wood creates an ideal study space

The feel of natural wood adds to the openness inherent in the architecture of the building.

The sophisticated maple pattern fits perfectly with the spacious design.



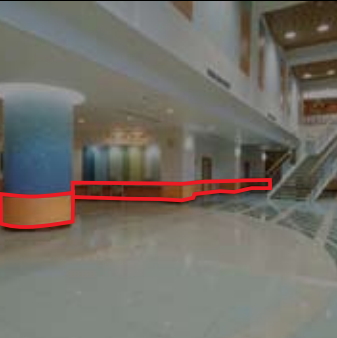
example

12

Hospitals

A clean, bright atmosphere created with the look of natural wood

A maple pattern with soft, nuanced colors has a soothing effect on visitors. This sense of cleanliness, created in part by the use of white walls, is crucial for hospitals.



Product shown

Maple grain

Product number **WG-836**

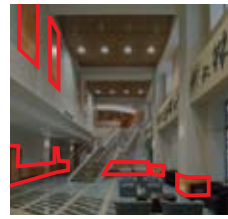


Product shown

Maple grain

Product number **WG-836**





Product shown

Maple grain

Product number **WG-836**



Product shown

Maple grain

Product number **WG-836**



example

13

Hospitals



Product shown

Cherry (Sakura) grain

Product number **WG-370**





Product shown

Cherry (Sakura) grain

Product number **WG-370**



Product shown

Pear (Nashi) grain

Product number **WG-411**



Product shown

Chic

Product number **PA-041**



The softness of wood grain brings relaxation

The soft feel of the cherry grain pattern creates a comfortable area where diverse groups of visitors can gather. The brightness of the wood provides a sense of security in open spaces.



Product shown

Cherry (Sakura) grain

Product number **WG-370**



example

14

Retirement homes



Product shown

Hard maple grain

Product number **WG-243**





Product shown

Mahogany grain

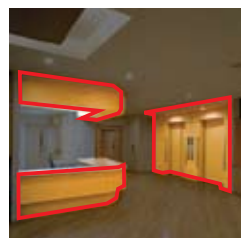
Product number **FW-887**



A touch of natural warmth creates a non-threatening environment

The warmth of hard maple creates an area of comfort and relaxation.

The open design creates a simpler, cleaner space for residents and visitors to enjoy.



Product shown

Hard maple grain

Product number **WG-243**



example

15

Exterior walls



The presence of wood shines through in an urban setting

Identity and uniqueness are communicated in a bustling urban setting through the use of a **DI-NOC™** Architectural Finish wood grain pattern and natural materials.



Product shown

Silver heart grain

Product number **WG-251**



Product shown

Oak (Nara) grain

Product number **FW-627**



Product shown

Silver heart grain

Product number **WG-251**



Canada

1-877-436-2487

AustriaPhone 43-1-86 686 284
Fax 43-1-86 686 374**Belgium**Phone 32-2-722-5118
Fax 32-2-722 5053**Bulgaria**Phone 359-2-960 19 34
Fax 359-2-960 19 26**Cesko**Phone 420-2-61 380 111
Fax 420-2-61 380 110**Croatia**Phone 385-1-249 97 50
Fax 385-1-237 17 35**Denmark**Phone 45-43-48 01 00
Fax 45-43 20 24 82**EastAG**Phone 41-41 799 31 00
Fax 41-41 799 31 90**Egypt**Phone 202-525 90 07
Fax 202-525 90 04**Estonia**Phone 372-611-5900
Fax 372-611-5901**France**Azur Phone 0 810 331 300
Fax 33-1-3031 65 41**Finland**Phone 358-9-5252 528
Fax 358-9-5252 279**Germany**Phone 49-2131 14 20 90
Fax 49-2131 14 32 00**Greece**Phone 30-210-68 85 300
Fax 30-210-68 43 281**Gulf SME+NME**Phone 971-4-367 07 77
Fax 971-4-367 06 63**Gulf Jeddah Saudi Arabia**Phone 966-2-284 27 10
Fax 966-2-284 27 10**Gulf Riyadh Saudi Arabia**Phone 966-1-217 13 24
Fax 966-1-217 34 21**Hungary**Phone 36-1-270 77 77
Fax 36-1-320 09 51**Italy**Phone 39-02-7035 2403
Fax 39-02-7035 3118**Israel**Phone 972-9-961 50 62
Fax 972-9-961 50 50**Latvia**Phone 371-706 6120
Fax 371-706 6121**Lithuania**Phone 370-5216 0780
Fax 370-5216 0263**Morocco**Phone 212-22 977 977
Fax 212-22 33 57 84**Netherlands**Phone 31-71-5450 362
Fax 31-71-5450 378**Norway**Phone 47-063-84
Fax 47-63-84 17 88**Pakistan**Phone 9221-111-225 536
Fax 9221-587 78 65**Poland**

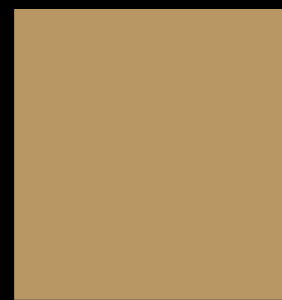
Phone 48-22-739 60 00

PortugalPhone 21-313 45 05
Fax 21-313 46 93**Romania**Phone 40-21-202 80 15
Fax 40-21-317 31 84**Russia**Phone 7095-784 74 74
Fax 7095-784 74 75**Serbia & Montenegro**Phone 381-11-328 3 328
Fax 381-11-328 3 329**Slovakia**Phone 421-2-49 105 211
Fax 421-2-444 544 76**South Africa**Phone 27-11-806 20 00
Fax 27-11 806 20 16**Spain**Phone 34-91-321 61 44
Fax 34-91-321 63 65**Sweden**Phone 46-8-922 100
Fax 46-8-922 287**Switzerland**Phone 41-44-724 91 61
Fax 41-44-724 94 90**Turkey**Phone 90-212-350 77 77
Fax 90-212-282 17 41**United Kingdom**

Phone 01344 857850

United States

1-800-328-3908

**Graphics Market Center**3M Center, Building 0220-12-E-04
St. Paul, MN 55144
USA

General Information:

1-800-374-6772

Technical Information:

1-800-328-3908

www.3Mgraphics.com

3M CanadaBox 5757
London, Ontario
Canada N6A 4T1
1-800-265-1840
Fax 519-452-6245**3M México S.A. de C.V.**Av. Santa Fe No. 55
Col. Santa Fe, Del. Alvaro
Obregón
México D.F. 01210
52-5-270-0400
Fax 52-5-270-2277**3M Puerto Rico, Inc.**Puerto Rico Industrial Park
PO Box 100
Carolina, PR 00986-0100
787-620-3000
Fax 787-750-3035Please recycle. Printed in USA.
© 3M 2008. All rights reserved.
75-5100-2510-1 (97.25) DPI